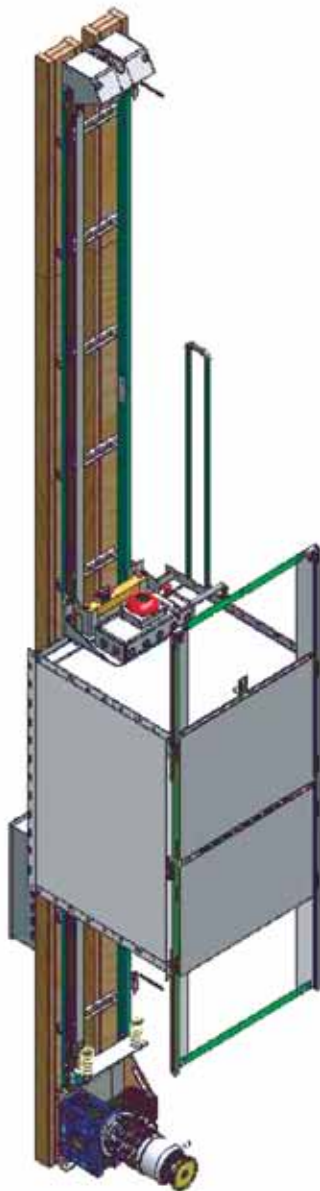


500# Commercial Dumbwaiter



Capacity - 500 lbs.

Travel - Up to 50 ft. (18" minimum)

Stops - 2 to 5 stops

Nominal Speed - 60 feet per minute

Electric Supply -230 volts, 30 amp,
single phase, 60 HZ

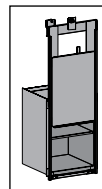
Powerhead - 3 HP Continuous duty motor
universal mount

Cable - 3/16" diameter steel cable

Hoistway Door Interlocks - Required at
each landing

Car - Powdercoated steel (standard)
Stainless Steel (optional)

Car Gate Options -



Bi-Parting (standard), Slide Up (optional)

Additional Options - contact your dealer



Products and illustrations shown may not be standard. Specifications describe equipment, which is either standard or optional. Stated ratings are based on standard equipment. Specifications and design are subject to change without notice.