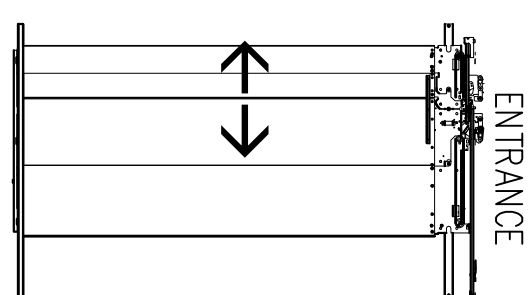
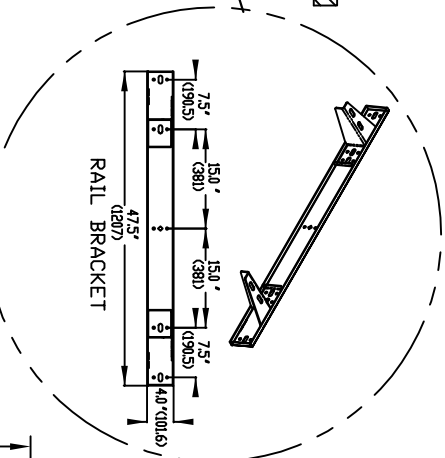
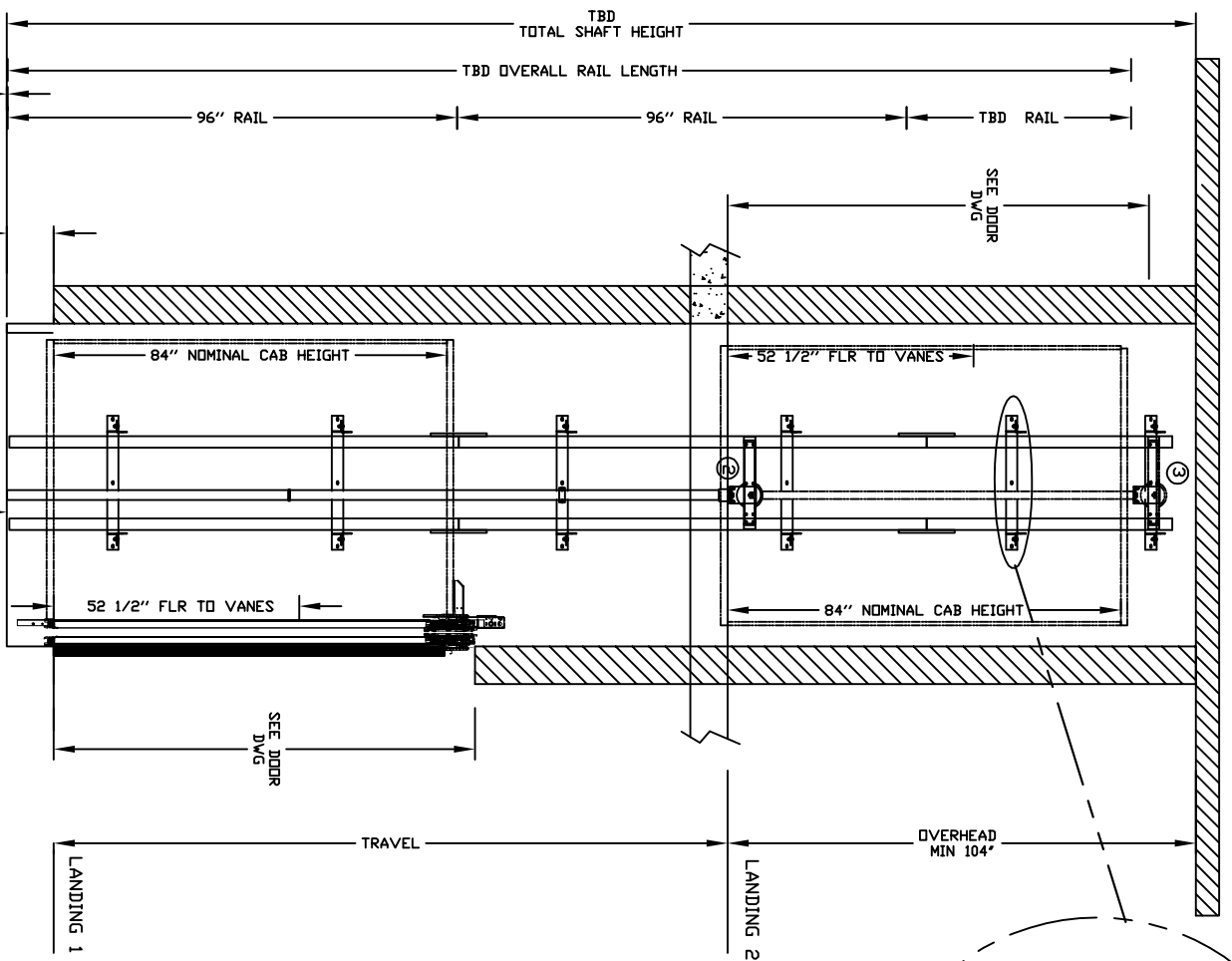
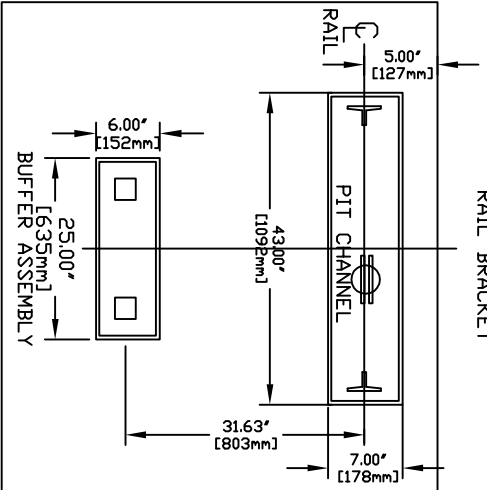


INFINITY AUTO SLIM DOORS Model TYPE 3

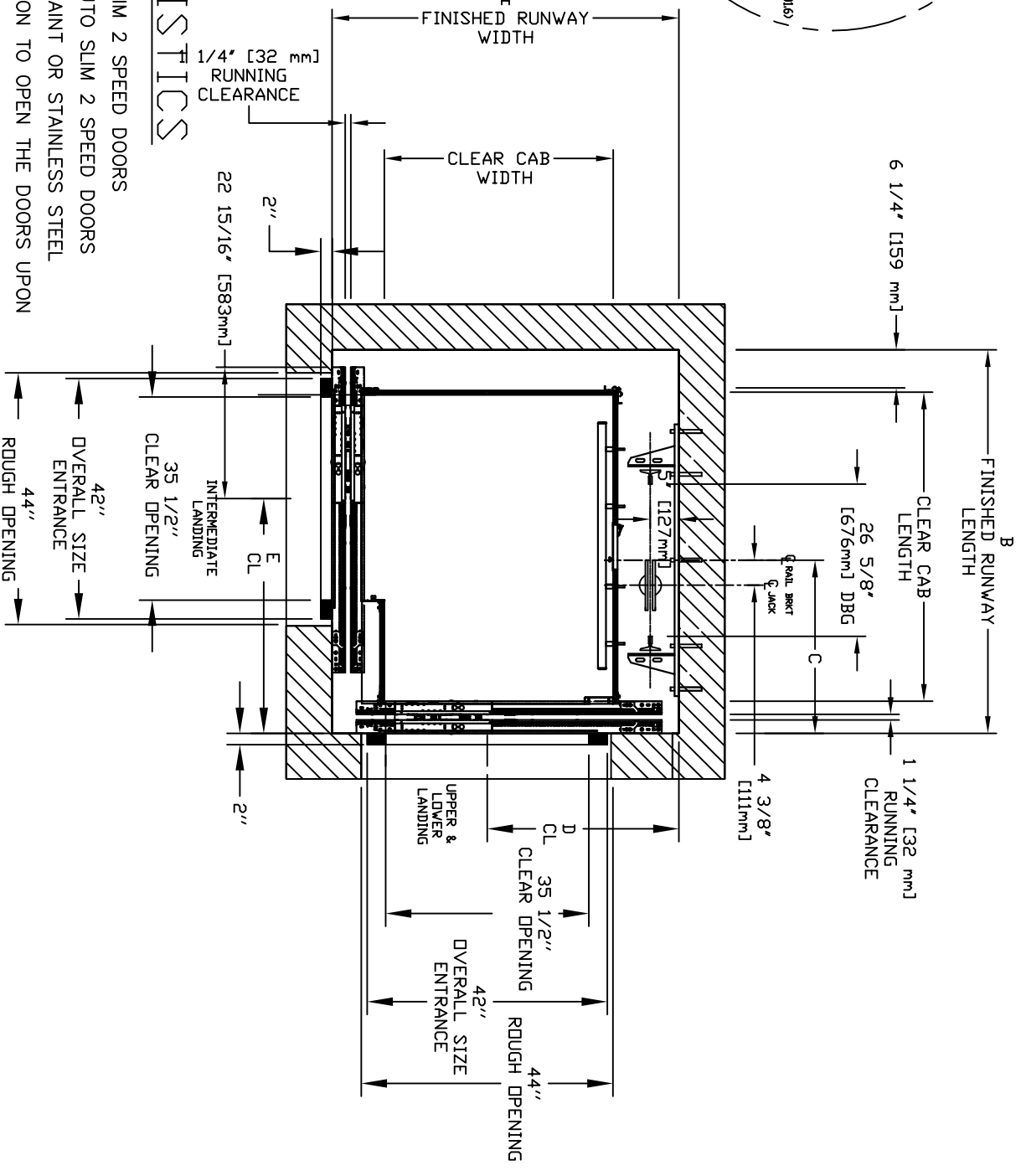


RAIL FORCES		R3 NOTE:	
*R1	*R2	PIT FLOOR TO SUPPORT LOAD DF: 5skips * (INCLUDES IMPACT)	
3041bf.	1941bf.	FOR TOTAL PULL-OUT FORCE ON RAIL BRACKET, R1 MUST BE DOUBLED eg.	
RAIL WEIGHT: 8.0 lbs / ft			



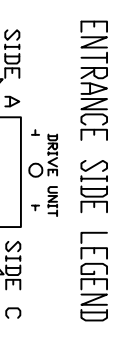
CHARACTERISTICS

CAB DOOR TYPE: AUTO SLIM 2 SPEED DOORS
 ENTRANCE DOOR TYPE: AUTO SLIM 2 SPEED DOORS
 2 SPEED DOORS FINISH: PAINT OR STAINLESS STEEL
 FULLY AUTOMATIC OPERATION TO OPEN THE DOORS UPON ARRIVAL AT THE LANDING LIGHTWEIGHT ALUMINUM SILL
 EMERGENCY BACK-UP BATTERY SYSTEM
 INFRARED DETECTION SYSTEM TO RETRACT DOORS BEFORE HITTING AN OBSTRUCTION



HDI	CLEAR INSIDE CAB WIDTH		CLEAR INSIDE CAB LENGTH		FINISHED RUNWAY WIDTH		FINISHED RUNWAY LENGTH		RAIL CENTER LINE		DOOR CENTER LINE		DOOR CENTER LINE	
	mm	Inches	mm	Inches	mm	Inches	mm	Inches	mm	Inches	mm	Inches	mm	Inches
914	36	1.372	54	1.540	60 5/8	1.702	67	826	32.5	838	33	1064	41 7/8	
914	36	1.524	60	1.540	60 5/8	1.854	73	902	35.5	838	33	1216	47 7/8	
1016	40	1.372	54	1.581	62 1/4	1.702	67	826	32.5	883	34 3/4	1064	41 7/8	
1219	48	1.524	60	1.759	69 1/4	1.778	70	889	35.0	857	33 3/4	768	30 1/4	

DOCUMENT REVISION 001, DATE: 11/18/10



RESIDENTIAL ELEVATOR INFINITY SLIMS DOORS TYPE 3

ALL INFORMATION IS SUBJECT TO CHANGE.
 PLEASE REFERENCE OUR ON-LINE DRAWINGS AT
www.savaria.io.com FOR THE MOST RECENT UPDATES

