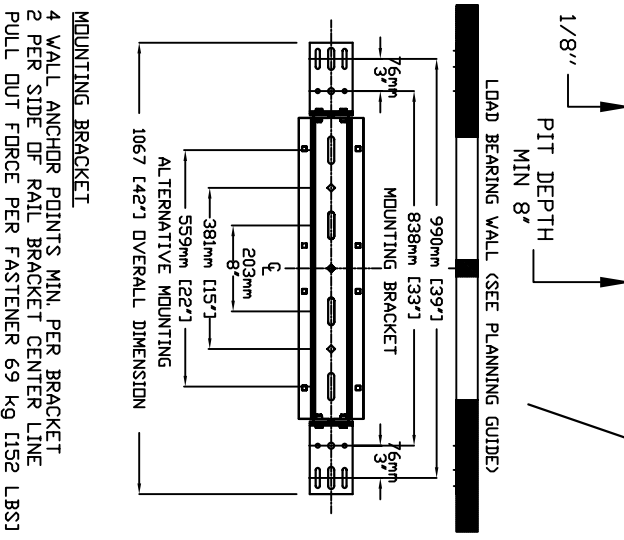
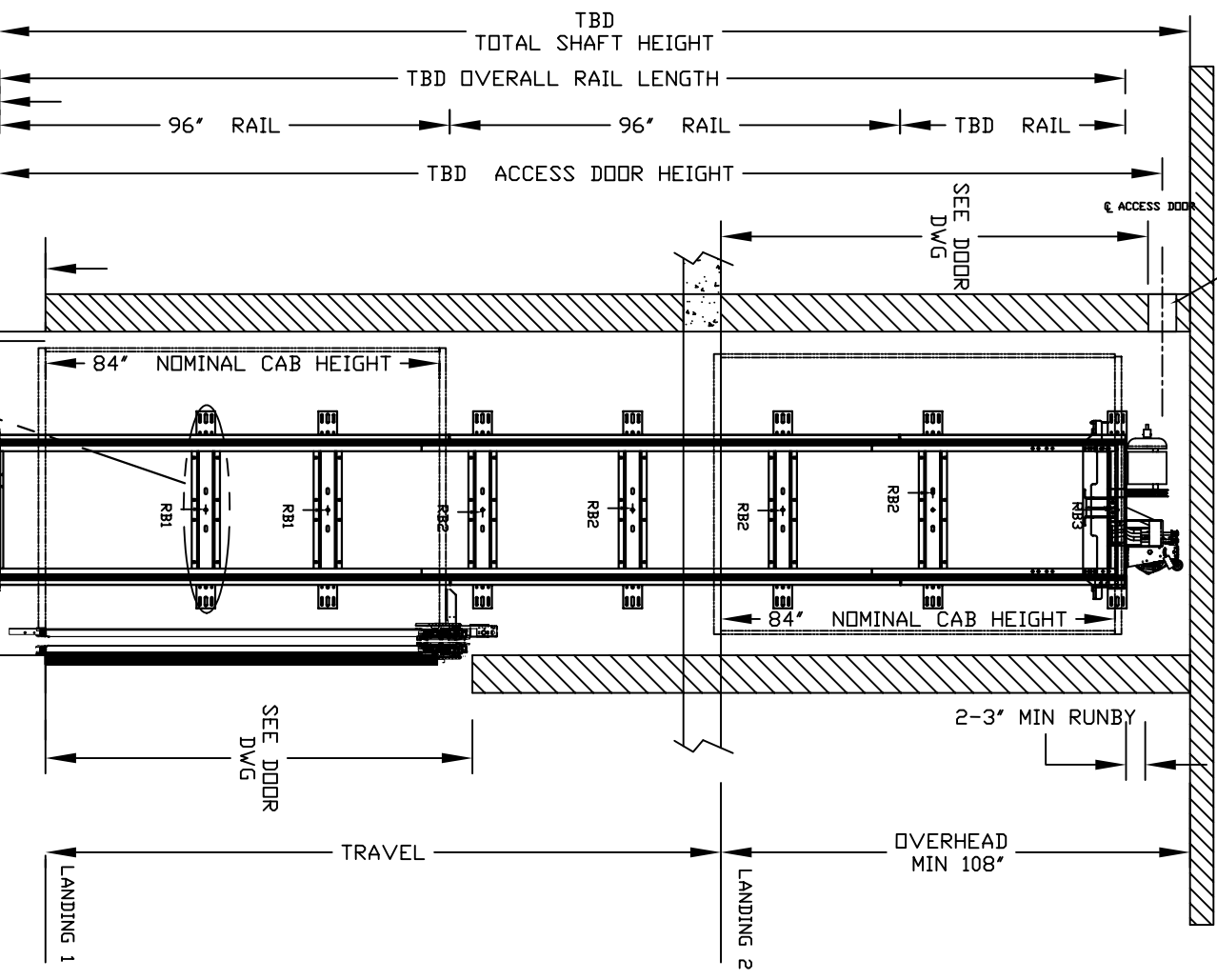


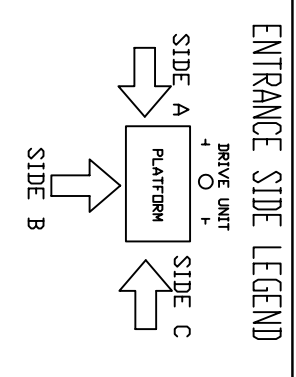
GEARLESS AUTO SLIM DOORS Model TYPE 3

6 1/2" X 6 1/2" ACCESS DOOR



FINAL RAIL BRACKET RB3	BELOW THE MOTOR CONCORD REPRESENTATIVE FOR EXACT LOCATION
INTERMEDIATE RAIL BRACKET RB2	32" [813mm] INTERVALS AFTER 2nd BOTTOM BRACKET
BOTTOM RAIL BRACKET RB1	39" [991mm] & 71" [1804mm] ABOVE PIT FLOOR

RAIL FORCES	
*R1	*R2
1382 kg [304 lbf]	882 kg [194 lbf]
RAIL ASSY WEIGHT: 180 lbs / 43	245 kg / 54
PIT FLOOR TO SUPPORT LOAD (INCLUDES IMPACT) 2909 kg	
PIT FORCE: R3 16400 lbs	



RESIDENTIAL ELEVATOR
GEARLESS SLIMS DOORS TYPE 3

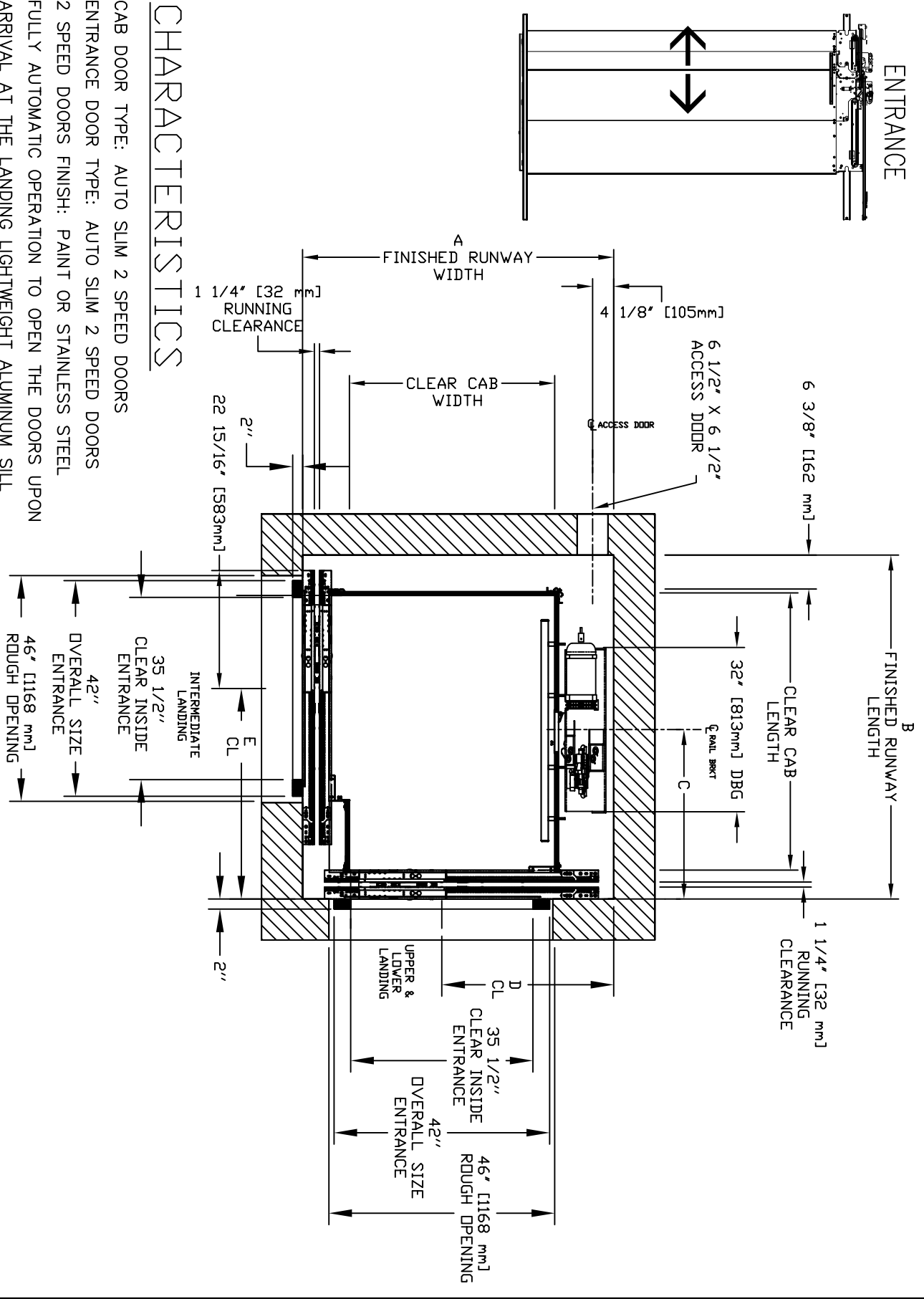
DOCUMENT REVISION 000, DATE: 02/21/12

ALL INFORMATION IS SUBJECT TO CHANGE. PLEASE REFERENCE OUR ON-LINE DRAWINGS AT www.savaria.com FOR THE MOST RECENT UPDATES

CLEAR INSIDE CAB WIDTH	CLEAR INSIDE CAB LENGTH	A		B		C		D		E	
		mm	Inches	mm	Inches	mm	Inches	mm	Inches	mm	Inches
914	36	1372	54	1540	60 5/8	1702	67	838	33	838	33
914	36	1524	60	1540	60 5/8	1854	73	914	36	838	33
1016	40	1372	54	1581	62 1/4	1702	67	838	33	883	34.75
						1702	67	838	33	34.75	1064
											41 7/8

CHARACTERISTICS

CAB DOOR TYPE: AUTO SLIM 2 SPEED DOORS
 ENTRANCE DOOR TYPE: AUTO SLIM 2 SPEED DOORS
 2 SPEED DOORS FINISH: PAINT OR STAINLESS STEEL
 FULLY AUTOMATIC OPERATION TO OPEN THE DOORS UPON ARRIVAL AT THE LANDING LIGHTWEIGHT ALUMINUM SILL EMERGENCY BACK-UP BATTERY SYSTEM
 INFRARED DETECTION SYSTEM TO RETRACT DOORS BEFORE HITTING AN OBSTRUCTION



ENTRANCE