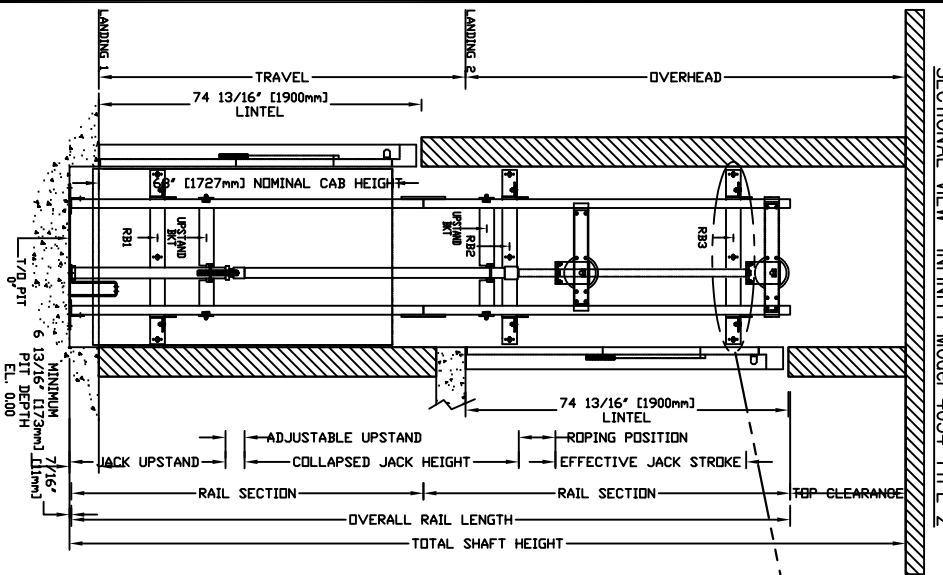


SECTIONAL VIEW - INFINITY Model 4054 TYPE 2

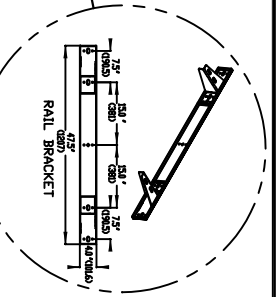


TOP RAIL BRACKET RB3	AT TOP OF HOISTWAY CONCORD REPRESENTATIVE LOCATION	FLOOR No. REAR FRONT	FLOOR HEIGHT
INTERMEDIATE RAIL BRACKET RB2	96" [2439mm] INTERVALS ABOVE BOTTOM BRACKET		
BOTTOM RAIL BRACKET RB1	24" [610mm] ABOVE PIT FLOOR		
TOTAL RISE			

PIT / OVERHEAD REQUIREMENTS			
MAX. SPEED (ft./min)	MIN. PIT TRAVEL	TOTAL OVERHEAD	MINIMUM OVERHEAD
36	8" ***	92" (2337)	

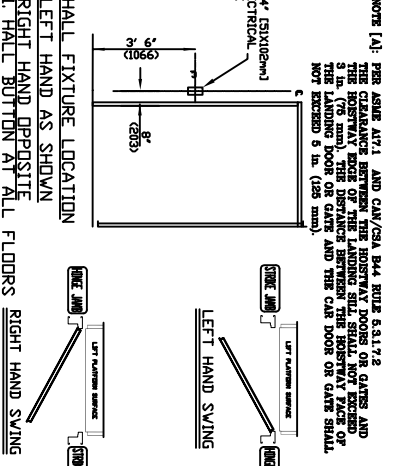
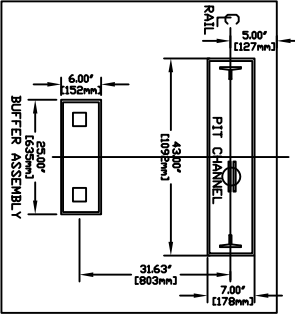
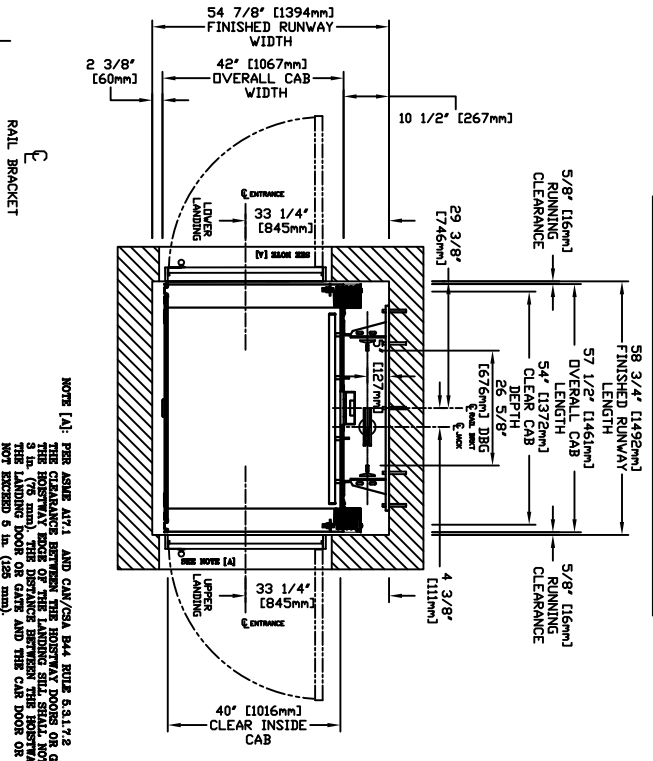
*** NOTE: Additional pit equipment required when over 36" [914.4mm] deep, consult your local dealer for details

DOCUMENT REVISION 002, DATE: 04/24/07



RAIL FORCES	R3 NOTE:
* R1	PIT FLOOR TO SUPPORT LOAD OF 500lbs. * (INCLUDES IMPACT)
* R2	* (INCLUDES IMPACT)
30kips.	FOR TOTAL PULL-DOWN FORCE ON RAIL BRACKET, R1 MUST BE DOUBLED UP.
RAIL WEIGHT: 80 lbs / ft.	

PLAN VIEW - INFINITY Model 4054 TYPE 2



RESIDENTIAL ELEVATOR INFINITY MODEL 4054 TYPE 2

CUSTOMER:	DATE:
PROJECT:	REVISION DATE:
LOCATION:	CREATED BY:

PROVISIONS BY OTHERS

*GENERAL
 HOISTWAY - THE HOISTWAY MUST BE IN ACCORDANCE WITH B355 SAFETY CODE FOR ELEVATORS (B44 SECTION 5.3), SAFETY CODE FOR ELEVATORS AND ESCALATORS (SAME A17D) AND ALL STATE/PROVINCIAL AND LOCAL CODES.
 ELBUB HOISTWAY - DUE TO CLOSE RUNNING CLEARANCES DWNER/AGENT MUST ENSURE THAT HOISTWAY AND PIT (WHERE PROVIDED) ARE LEVEL, PLUMB AND SQUARE AND ARE IN ACCORDANCE WITH THE DIMENSIONS ON THESE DRAWINGS.
 MINIMUM OVERHEAD CLEARANCE - DWNER/AGENT MUST ENSURE MINIMUM OVERHEAD CLEARANCE IS IN COMPLIANCE WITH CODES.
 CONSTRUCTION SITE - DWNER/AGENT TO PROVIDE ALL MASONRY, CARPENTRY AND DRY-WALL WORK AS REQUIRED AND SHALL PATCH AND MAKE GOOD (INCLUDING FINISH PAINTING) ALL AREAS WHERE WALLS/FLOORS MAY REQUIRE TO BE CUT, DRILLED OR ALTERED IN ANY WAY TO PERMIT THE PROPER INSTALLATION OF THE LIFT.
 DIMENSIONS
 CONTRACTOR/CUSTOMER TO VERIFY ALL DIMENSIONS AND REPORT ANY DISCREPANCIES TO OUR OFFICE IMMEDIATELY.
 *STRUCTURAL
 ELBUB/SUPPORT WALL LOADS - STRUCTURAL ENGINEER TO ASSURE THAT BUILDING AND SHAFT WALL SAFETY SUPPORT ALL LOADS IMPROD BY THE LIFT EQUIPMENT. REFER TO THE TABLES ON THIS DRAWING FOR LOADS IMPROD BY THE EQUIPMENT.
 WHERE DOORS ARE REQUIRED - SUITABLE LINTELS MUST BE PROVIDED BY DWNER/AGENT. DOOR FRAMES ARE NOT DESIGNED TO SUPPORT OVERHEAD WALL LOADS.
 *MACHINE ROOM
 LOCATION / ACCESS - MACHINE ROOM LOCATED AT THE LOWEST LEVEL ADJACENT TO HOISTWAY, UNLESS SHOWN OTHERWISE ON THE LAYOUT DRAWINGS. FIELD ADJUSTMENT BY INSTALLER MAY BE NECESSARY TO MEET JOB SITE CONDITIONS OR REGULATIONS. ACCESS TO MACHINE ROOM TO BE THROUGH A SELF CLOSING LOCKING DOOR. SLEEVES FOR OIL & ELECTRIC LINES - FROM MACHINE ROOM TO RUNWAY AS REQUIRED. (POSITION PER INSTALLERS INSTRUCTIONS).

INPUT VOLTAGE	DISCONNECT SIZE (AMPS)	FUSE (AMPS)	CURRENT (AMPS)	FULL LOAD
V/PH/CYCLED	30	20	30	106
MOTOR INFO	60	30	30	170
CAB LIGHTS	115/1PH		15	

*ELECTRICAL
 POWER SUPPLY - (SEE SPECIFICATIONS) LOCKABLE FUSED DISCONNECT WITH AUXILIARY CONTACT TO BREAK THE BATTERY FEED, OR CIRCUIT BREAKERS WITH A 3-POLE BREAKER FOR BATTERY FEED REQUIRED, IN COMPLIANCE WITH ELECTRICAL CODE, AS FOLLOWS:
 (LOCATED ON WALL ON LOCK JAMB SIDE OF MACHINE ROOM DOOR) PERMANENT POWER - BEFORE INSTALLATION CAN BEGIN, PERMANENT POWER MUST BE SUPPLIED.
 LIGHTING - DWNER/AGENT TO ENSURE AT LEAST 5 FTC OR 54 LUX AMBIENT LIGHTING OVER LIFT AREA.
 *ENTRANCES
 FASCIA PANEL, BELOW UPPER LEVEL ENTRANCE - WHERE REQUIRED, FASCIA PANEL MUST BE FASTENED TO A SOLID WALL AND BE PERPENDICULAR TO THE FLOOR AND WALLS. HOISTWAY FASCIA IS NOT SELF-SUPPORTING FOR LONG, CONTINUOUS RUNS VOID OF ENTRANCES. ADEQUATE SUPPORT FOR THE FASCIA MUST BE PROVIDED.
 ENTRANCE ASSEMBLIES MUST BE ADJUSTED TO ALIGN WITH PLAYERS AND INTERLOCK EQUIPMENT. OTHERS TO BE ADJUSTED TO ALIGN AN ADJUDICATE BUSHING DEPTH.
 *ENTRANCE ASSEMBLIES ARE IN PLACE ENTRANCE ASSEMBLY MUST BE SECURELY FASTENED TO WALLS BY ELEVATOR CONTRACTOR.
 NOTE B
 ALL INFORMATION IS SUBJECT TO CHANGE.
 PLEASE REFERENCE OUR ON-LINE DRAWINGS AT WWW.CONCORDELEVATOR.COM FOR THE MOST RECENT UPDATES

THE INFORMATION SHOWN HEREIN IS THE EXCLUSIVE PROPERTY OF savaria

AND MAY NOT BE USED BY OTHERS WITHOUT WRITTEN CONSENT

SAVARIA