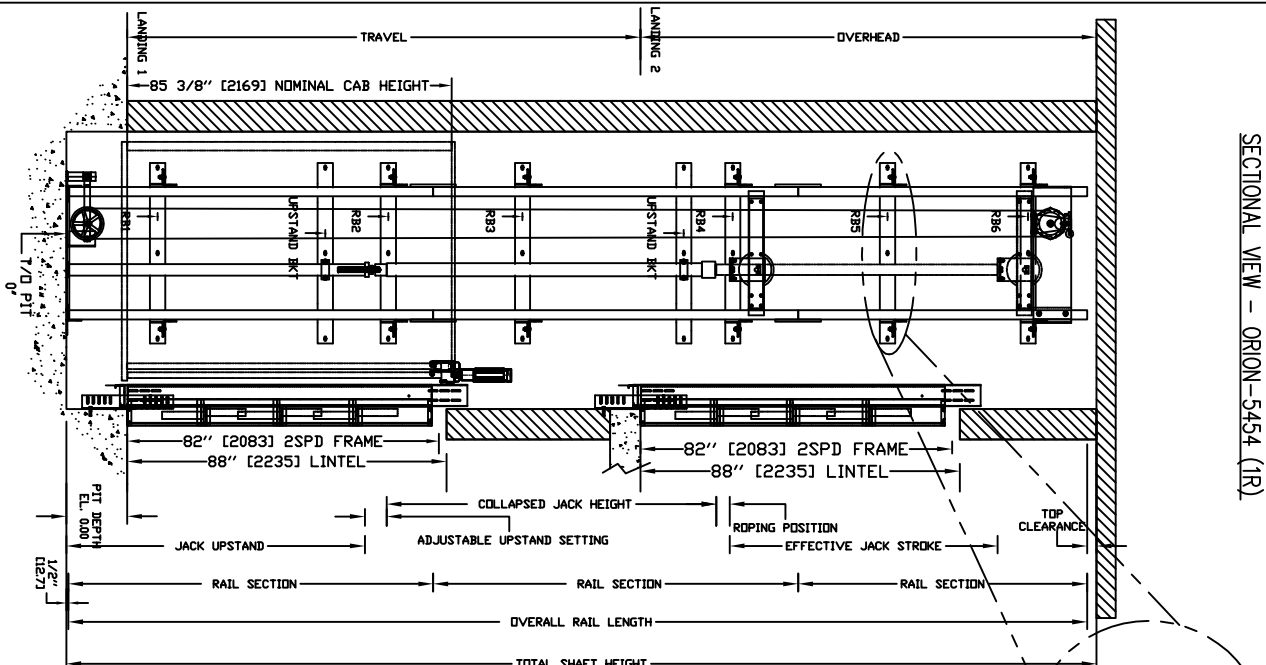


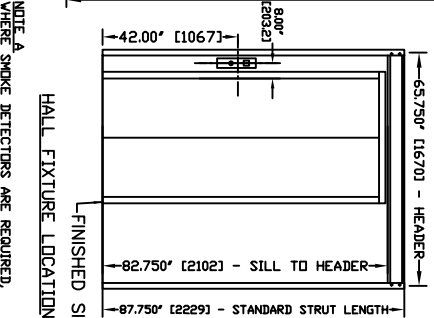
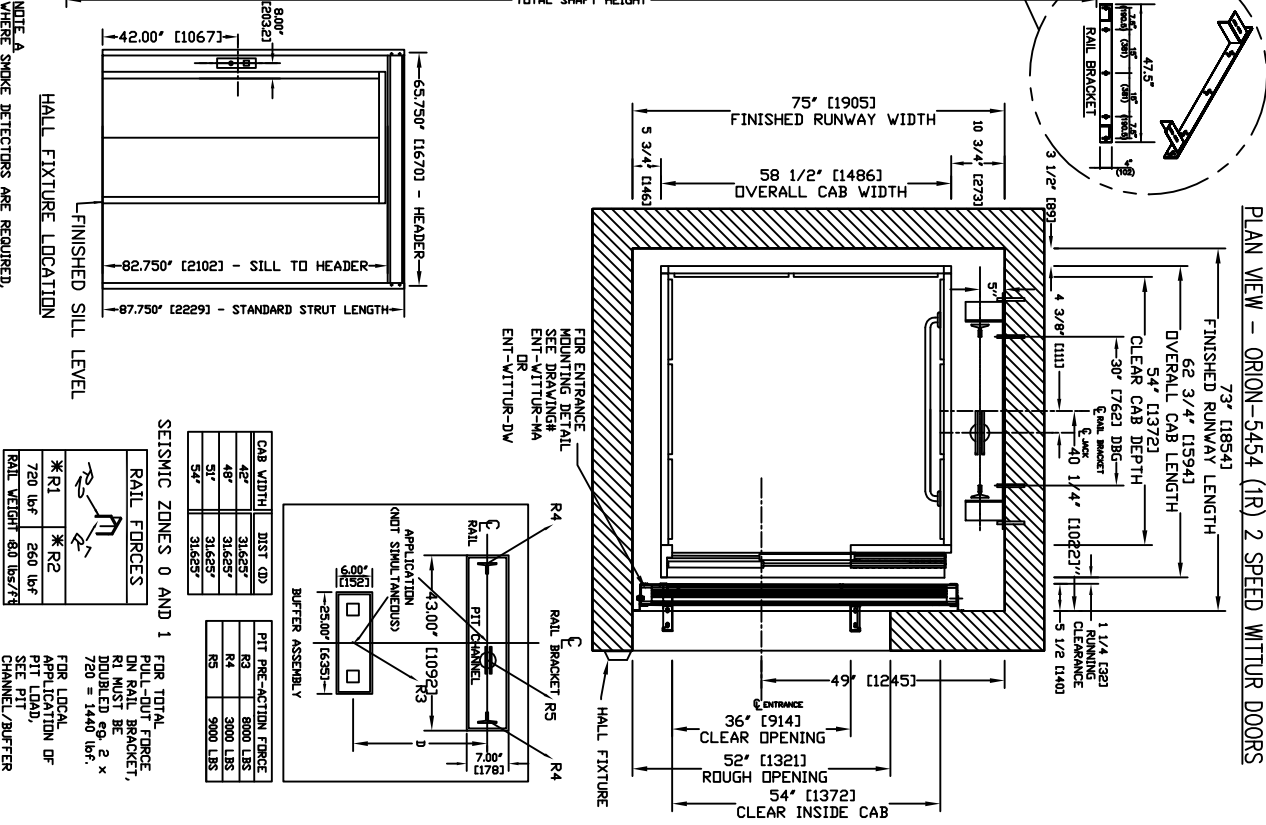
SECTIONAL VIEW - ORION-5454 (1R)



PIT / OVERHEAD REQUIREMENTS	
MAX. SPEED (ft/min)	30
PIT TRAVEL	14" ***
TOTAL OVERHEAD NEW BLDG	1207" (3048)
TOTAL OVERHEAD EXISTING BLDG	1317" (3337)

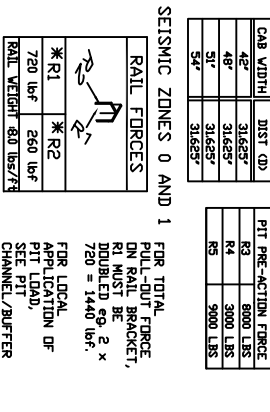
*** NOTE: Additional pit equipment required when over 36" deep. Consult your local dealer for details

PLAN VIEW - ORION-5454 (1R) 2 SPEED WITTUR DOORS



SEISMIC ZONES 0 AND 1	
CAB WIDTH	DIST. (D)
46"	31.653"
48"	31.653"
51"	31.653"
54"	31.653"

PIT PRE-ACTION FORCE	
R3	800 LBS
R4	300 LBS
R5	900 LBS



PROVISIONS BY OTHERS

***GENERAL**
 HOISTWAY - THE HOISTWAY MUST BE IN ACCORDANCE WITH SAFETY CODE FOR ELEVATORS (ASME A17.1 OR B44-2000) AND ALL STATE/PROVINCIAL AND LOCAL CODES.
 ELUM HOISTWAY - DUE TO CLOSE RUNNING CLEARANCES DWNER/AGENT MUST ENSURE THAT HOISTWAY AND PIT (WHERE PROVIDED) ARE LEVEL, FLURE AND SQUARE AND ARE IN ACCORDANCE WITH THE DIMENSIONS ON THESE DRAWINGS.
 MINIMUM OVERHEAD CLEARANCE - DWNER/AGENT MUST ENSURE MINIMUM OVERHEAD CLEARANCE IS IN COMPLIANCE WITH CODES.
 CONSTRUCTION SITE - DWNER/AGENT TO PROVIDE ALL MASONRY, CARPENTRY AND TRAVEL WORK AS REQUIRED AND SHALL PATCH AND MAKE GOOD (INCLUDING FINISH PAINTING) ALL AREAS WHERE WALLS/FLOORS MAY REQUIRE TO BE CUT, DRILLED OR ALTERED IN ANY WAY TO PERMIT THE PROPER INSTALLATION OF THE LIFT.
DIMENSIONS
 CONTRACTOR/CUSTOMER TO VERIFY ALL DIMENSIONS AND REPORT ANY DISCREPANCIES TO OUR OFFICE IMMEDIATELY.
***STRUCTURAL**
 ELOOR/SUPPORT WALL LOADS - STRUCTURAL ENGINEER TO ASSURE THAT BUILDING AND SHAFT WILL SAFELY SUPPORT ALL LOADS IMPOSED BY THE LIFT EQUIPMENT. REFER TO THE TABLES ON THIS DRAWING FOR LOADS IMPOSED BY THE EQUIPMENT.
 DOORS - SUITABLE LINTELS MUST BE PROVIDED BY DWNER/AGENT. DOOR FRAMES ARE NOT DESIGNED TO SUPPORT OVERHEAD WALL LOADS.
***MACHINE ROOM**
 LOCATION / ACCESS - MACHINE ROOM LOCATED AT THE LOWEST LOCATION / ACCESS - HOISTWAY UNLESS SHOWN OTHERWISE ON THE LAYOUT DRAWINGS. ACCESS MUST BE PROVIDED TO THE MACHINE ROOM NECESSARY TO MEET JOB SITE CONDITIONS OR REGULATIONS. ACCESS TO MACHINE ROOM TO BE THROUGH A SELF CLOSING AND SELF LOCKING DOOR.
 SLEEVES FOR OIL & ELECTRIC LINES - PROVIDED BY OTHERS, FROM MACHINE ROOM TO HOISTWAY. POSITION PER INSTALLERS INSTRUCTIONS.

INPUT VOLTAGE (V/PH/CT/CED)	DISCONNECT SIZE (AMPS)	FUSE (AMPS)	FULL LOAD CURRENT (AMPS)
480V/3PH/60HZ	30	30	15.6
230V/1PH/60HZ	60	50	21
115V/1PH		15	

***ELECTRICAL**
 POWER SUPPLY - (SEE SPECIFICATIONS) LOCKABLE FUSED DISCONNECT WITH AUXILIARY CONTACT TO BREAK THE BATTERY FEED OR CIRCUIT BREAKERS WITH A 3-POLE BREAKER FOR BATTERY FEED REQUIRED. IN COMPLIANCE WITH ELECTRICAL CODE, AS FOLLOWS:
 (LOCATED ON WALL ON LOCK JAMB SIDE OF MACHINE ROOM DOOR)
 PERMANENT POWER - BEFORE INSTALLATION CAN BEGIN, PERMANENT POWER MUST BE SUPPLIED.
 LIGHTING - DWNER/AGENT TO ENSURE AT LEAST 5 FT-C DR 54 LUX AMBIENT LIGHTING OVER ELEVATOR AREA.
***ENTRANCES**
 FASCIA PANEL BELOW UPPER LEVEL ENTRANCE - WHERE REQUIRED, FASCIA PANEL MUST BE FASTENED TO A SOLID WALL AND BE PERPENDICULAR TO THE FLOOR AND WALLS. HOISTWAY FASCIA IS NOT SELF-SUPPORTING FOR LONG CONTINUOUS RUNS VOID OF ENTRANCES. ADEQUATE SUPPORT AND THE FASCIA MUST BE PROVIDED BY OTHERS.
 ENTRANCE ASSEMBLIES - ENTRANCE ASSEMBLIES MUST BE ADJUSTED TO ALIGN WITH PLUMB AND INTERLOCK EQUIPMENT. OTHERS TO ALLOW AN ADEQUATE ROUGH OPENING.
 RETURN WALLS - RETURN WALLS AT ENTRANCES MUST BE BUILT-IN BY OTHERS AFTER ENTRANCE ASSEMBLIES ARE IN PLACE. ENTRANCE ASSEMBLY MUST BE SECURELY FASTENED TO WALLS BY ELEVATOR CONTRACTOR.



ORION MODEL 5454 (1R)

REV-000