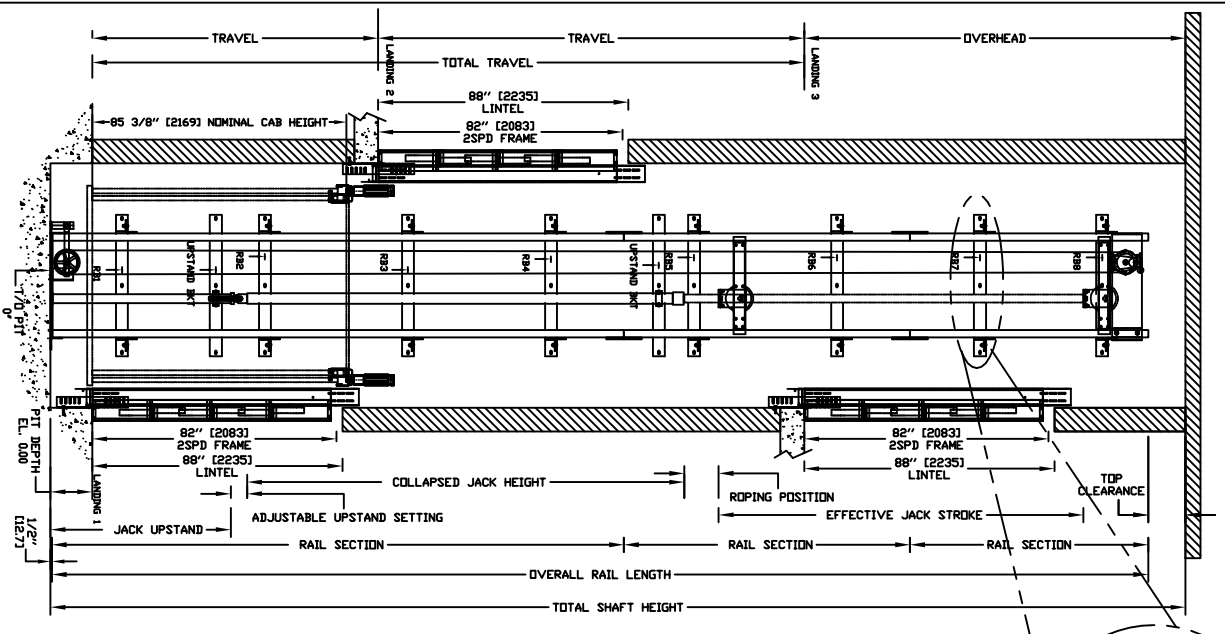


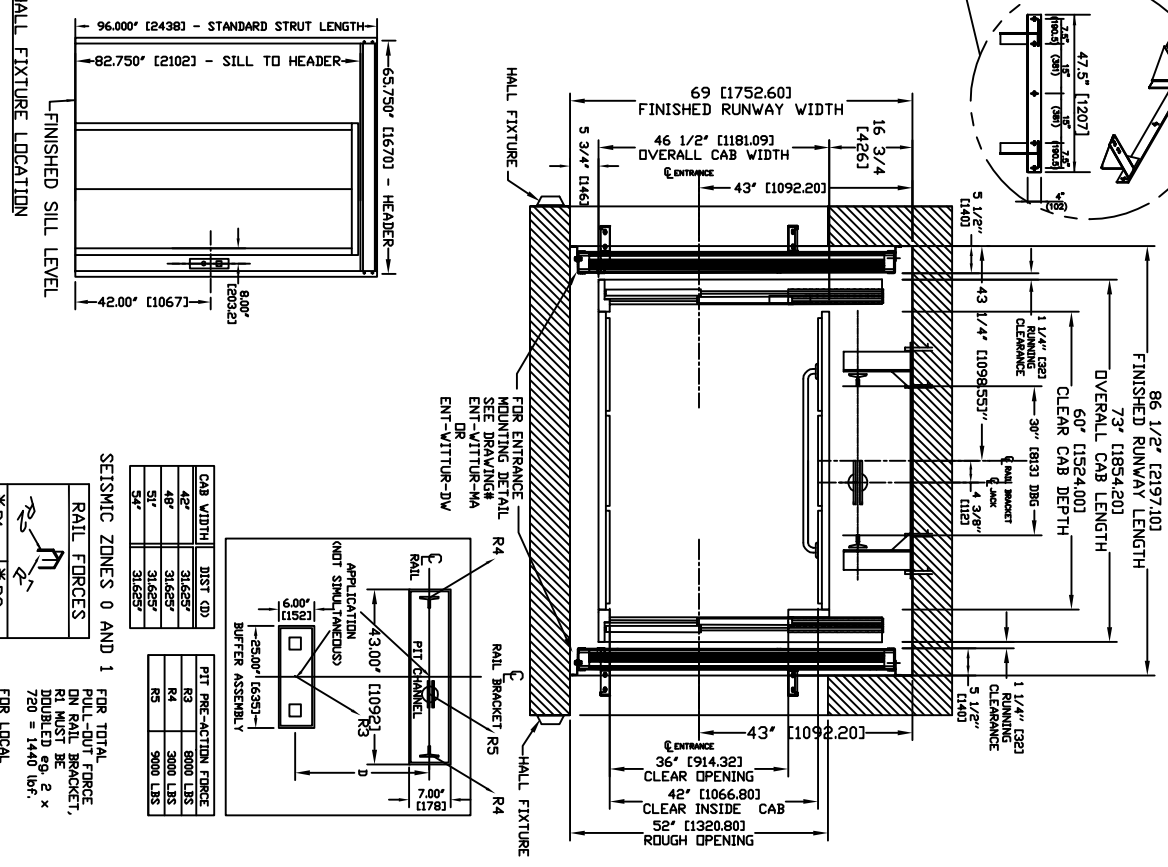
SECTIONAL VIEW - ORION-4260W



PIT / OVERHEAD REQUIREMENTS	
MAX. SPEED (ft/min)	30
PIT	14" ***
TOTAL TRAVEL	131' (3327)
OVERHEAD	120' (3048)
NEW BLDG EXISTING BLDG	

*** NOTE: Additional pit equipment required when over 36" deep, consult your local dealer for details

PLAN VIEW - ORION-4260W 2 SPEED WITTUR DOORS



NOTE A
WHERE SMOKE DETECTORS ARE REQUIRED, WIRING FROM A NORMALLY CLOSED CONTACT SWITCH TO THE DESIGNATED RETURN LANDING SMOKE DETECTOR SHALL BE PROVIDED TO THE CONTROLLER. A NORMALLY CLOSED CONTACT REPRESENTING ALL OTHER SMOKE DETECTORS MUST BE PROVIDED TO THE CONTROLLER.

NOTE B
ALL INFORMATION IS SUBJECT TO CHANGE. PLEASE REFERENCE OUR ON-LINE DRAWINGS AT www.concor-elevator.com FOR THE MOST RECENT UPDATES

CAB WIDTH	DIST. (D)
48"	31.685"
48"	31.685"
54"	31.685"

RAIL FORCES	
*R1	*R2
720 lbf	260 lbf
RAIL WEIGHT	80 lbf/7ft

PIT PRE-ACTION FORCE	
R2	8000 LBS
R4	3000 LBS
R3	3000 LBS

WARNING: ONLY APPLICABLE FOR SEISMIC ZONES 0 AND 1. FOR SEISMIC ZONES OTHER THAN 0 OR 1 PLEASE CONSULT WITH MANUFACTURER FOR REGIONAL SPECIFIC REQUIREMENTS.

SEISMIC ZONES 0 AND 1
FOR TOTAL FULL-DUTY FORCE IN RAIL BRACKET, DOUBLE 80, 2 x 720 = 1440 lbf.
FOR LOCAL APPLICATION OF PIT LOAD, CHANNEL/BUFFER SKETCH.

PROVISIONS BY OTHERS

***GENERAL**
HOISTWAY - THE HOISTWAY MUST BE IN ACCORDANCE WITH SAFETY CODE FOR ELEVATORS (ASME A17.1 OR B44-2000) AND ALL STATE/PROVINCIAL AND LOCAL CODES.
PLUMB HOISTWAY - DUE TO CLOSE RUNNING CLEARANCES DIVER/AGENT MUST ENSURE THAT HOISTWAY AND PIT (WHERE PROVIDED) ARE DIMENSIONS ON THESE DRAWINGS.
MINIMUM OVERHEAD CLEARANCE - DIVER/AGENT MUST ENSURE MINIMUM OVERHEAD CLEARANCE IS IN COMPLIANCE WITH CODES.
CONSTRUCTION SITE - DIVER/AGENT TO PROVIDE ALL MASONRY, REINFORCEMENT AND BRICKLAYER WORK AS REQUIRED AND SHALL PATCH AND MAKE GOOD CONSTRUCTION DAMAGE TO ALL AREAS WHERE WALLS, FLOORS OR CEILING ARE REQUIRED TO BE REINFORCED IN ANY WAY TO PERMIT THE PROPER INSTALLATION OF THE LIFT.
DIMENSIONS - CONTRACTOR/CUSTOMER TO VERIFY ALL DIMENSIONS AND REPORT ANY DISCREPANCIES TO OUR OFFICE IMMEDIATELY.

***STRUCTURAL**
FLOOR/SUPPORT WALL LOADS - STRUCTURAL ENGINEER TO ASSURE THAT BUILDING AND SHAFT WALL SAFELY SUPPORT ALL LOADS IMPOSED BY THE LIFT EQUIPMENT. REFER TO THE TABLES ON THIS DRAWING FOR LOADS IMPOSED BY THE EQUIPMENT.
DOORS - SUITABLE LINTELS MUST BE PROVIDED BY DIVER/AGENT. DOOR FRAMES ARE NOT DESIGNED TO SUPPORT OVERHEAD WALL LOADS.
***MACHINE ROOM**
LOCATION / ACCESS - MACHINE ROOM LOCATED AT THE LOWEST LEVEL ADJACENT TO HOISTWAY UNLESS SHOWN OTHERWISE ON THE LAYOUT DRAWINGS. FIELD ADJUSTMENT BY INSTALLER MAY BE NECESSARY TO MEET JOB SITE CONDITIONS OR REGULATIONS. ACCESS TO MACHINE ROOM TO BE THROUGH A SELF-CLOSING AND SELF-LOCKING DOOR.
SLEEVES FOR OIL & ELECTRIC LINES - PROVIDED BY OTHERS. FROM MACHINE ROOM TO HOISTWAY. POSITION PER INSTALLERS INSTRUCTIONS.

INPUT VOLTAGE	DISCONNECT	TIME DELAY	FULL LOAD
(V)/PH/CO/LED	SIZE (AMPS)	FUSE (AMPS)	CURRENT (AMPS)
120V/PH/CO/LED	30	30	15.6
230V/PH/CO/LED	60	30	21
CAB LIGHTS	115V/PH	15	

***ELECTRICAL**
POWER SUPPLY - (SEE SPECIFICATIONS) LOCKABLE FUSED DISCONNECT WITH AUXILIARY CONTACT TO BREAK THE BATTERY FEED, OR CIRCUIT BREAKERS WITH A 3-POLE BREAKER FOR BATTERY FEED REQUIRED, IN COMPLIANCE WITH ELECTRICAL CODE, AS FOLLOWS:
(LOCATED ON WALL ON LOCK JAMB SIDE OF MACHINE ROOM DOOR)
PERMANENT POWER - BEFORE INSTALLATION CAN BEGIN, PERMANENT POWER MUST BE SUPPLIED.
LIGHTING - DIVER/AGENT TO ENSURE AT LEAST 5 FTC OR 54 LUX AMBIENT LIGHTING OVER ELEVATOR AREA.

***ENTRANCES**
FASCIA PANEL, BELDUPPER LEVEL, ENTRANCE - WHERE REQUIRED, FASCIA PANEL MUST BE FASTENED TO SAND WALK AND BE PERPENDICULAR TO THE FLOOR AND WALLS. HOISTWAY FASCIA IS NOT SELF-SUPPORTING FOR LONG CONTINUOUS RUNS. VOID OF ENTRANCES, APPROPRIATE SUPPORT AND THE FASCIA MUST BE PROVIDED BY OTHERS.
ENTRANCE ASSEMBLIES - ENTRANCE ASSEMBLIES MUST BE ADJUSTED TO ALIGN WITH PLATFORM AND INTERLOCK EQUIPMENT. OTHERS TO ALLOW AN ADEQUATE ROUGH OPENING.
RETURN WALLS - RETURN WALLS AT ENTRANCES MUST BE BUILT-IN BY OTHERS AFTER ENTRANCE ASSEMBLIES ARE IN PLACE. ENTRANCE ASSEMBLY MUST BE SECURELY FASTENED TO WALLS BY ELEVATOR CONTRACTOR.



ORION MODEL 4260W

REV-000